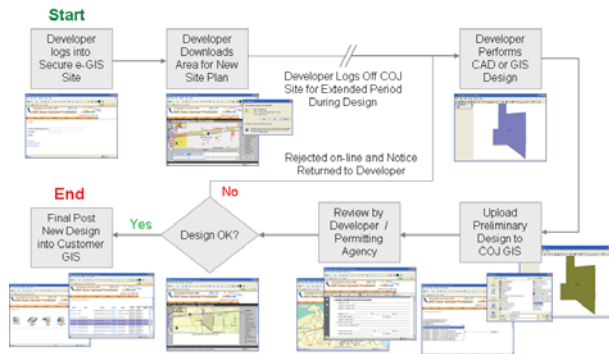




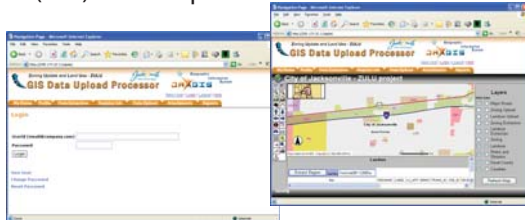
e-GIS Data Loader

The Future of Cad to GIS Uploading!

The **e-GIS Data LoaderSM** Internet-based application was developed to improve the business process used by local government to receive engineering designs and project documents from planning and engineering firms. The e-GIS Data Loader can be configured to support change requests for Zoning, Land Use, Land Development or Right of Way permitting.



The secure application includes a profile for each engineering firm and users responsible for submitting site plans. The user logs into a secure Internet application and determines an area of interest (AOI) for their plan.



The AOI data can be downloaded into a GIS file format and used as the base map for engineering design. The area must encompass all features that will be involved in the proposed change. A job order is created as the download occurs and that number is used throughout the workflow process.

Downloading data from the source system eliminates potential coordinate system and layout errors upfront, reducing the level of quality control required later in the process. The user can then use the source data to design proposed changes to the area they selected using a CAD or GIS tool of their choice.



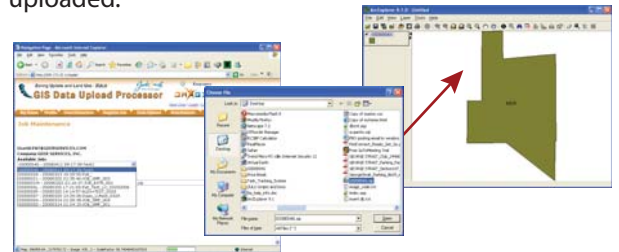
This product helps reduce paper consumption

Please contact Geer Services, Inc. for more information or to schedule a product demonstration.

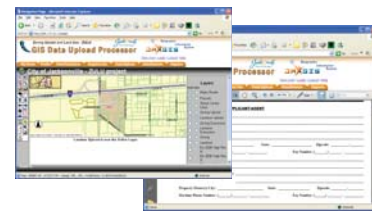
e-GIS Data Loader Benefits

- Eliminates Paper Process
- Reduces Work Content
- Reduces Cycle Time
- Provides Cost Savings

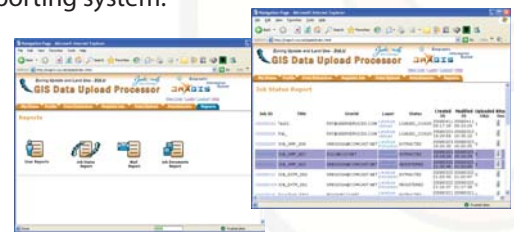
The developer's completed design is then registered and uploaded to the server using a simple web form. The user must select the job number for the project and attach the CAD or GIS file for upload to the system. The user profile stores the standard CAD or GIS file format and projection used by the submitting company so data is translated and re-projected as the data is uploaded.



Submitted data is populated into a job workspace in the government ArcSDE® or other spatial database. Job tracking is provided in an associated relational database. Documents and images may be uploaded as part of the job and viewed from the on-line system.



Management reports are available containing job information for on-line viewing and analysis by authorized external and administrative users. This allows quality review and acceptance procedures to ensure digital plans are submitted in the correct projection and location relative to the local government GIS database. Jobs can be accepted or rejected after the quality review. Individual users can review the status of their job at any time using the reporting system.



The job data is then posted to the production database after proper approval.

1-800-601-GEER
www.geerservices.com
www.geergis.com

